

**ASSESSMENT OF
INFILTRATION PERFORMANCE
AND MAINTENANCE OF
PAVEDRAIN PAVEMENTS**
FOR TWO APPLICATIONS IN LOUISVILLE, KY

UL
UNIVERSITY OF
LOUISVILLE
CENTER FOR
INFRASTRUCTURE RESEARCH

Hamidreza Kazemi, PhD Candidate
Thomas Rockaway, Ph.D., P.E.
Josh Rivard, MUP
Center for Infrastructure Research
Civil and Environmental Engineering Department
University of Louisville

1

PROJECT BACKGROUND

- ❖ MSD's Consent Decree
to decrease the number and volume of overflows entering
the combined sewer system
- ❖ CSO Mitigation by use of Green
Infrastructure Stormwater Controls
- ❖ CSO130 Sewershed Project

**UNIVERSITY OF
LOUISVILLE**
CENTER FOR
INFRASTRUCTURE RESEARCH

DRAFT ONLY

2

PROJECT BACKGROUND

❖ Monitoring Effort

- ✓ Multi-year effort to evaluate and establish long term trends
- ✓ Standardize Design and Maintenance Criteria
- ✓ Partnership
- ✓ USEPA monitoring of green management practices



DRAFT ONLY

3

PROJECT BACKGROUND

❖ The Center for Infrastructure Research Role

- ✓ Monitoring Planning
- ✓ Instrumentation installation
- ✓ Maintenance support
- ✓ Hydrological Performance and Maintenance Assessment



DRAFT ONLY

4

PROJECT DESCRIPTION

❖ CSO130 Sewershed

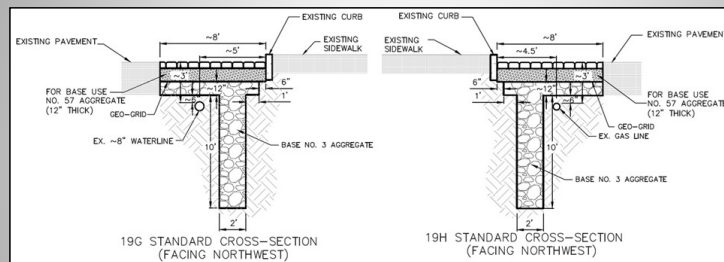
- ✓ Initial phase of the project started by installing two permeable pavement controls in December 2011



DRAFT ONLY

PROJECT DESCRIPTION

❖ CONTROLS 19G and 19H



Characteristic	Control 19H	Control 19G
Drainage Area (acre)	0.27	0.72
Impervious %	59%	61%
Impervious Area: Control's Area	16:1	20:1
Control's Length (ft)	55	120
Control's Width (ft)	8	8

UNIVERSITY OF
LOUISVILLE
CENTER FOR
INFRASTRUCTURE RESEARCH

DRAFT ONLY

PROJECT DESCRIPTION



UNIVERSITY OF
LOUISVILLE
CENTER FOR
INFRASTRUCTURE RESEARCH

DRAFT ONLY

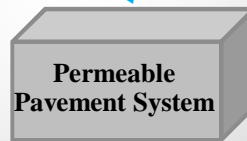
7

MONITORING EFFORT

❖ Hydrological Performance

**Rainfall and
Storm Runoff**

**Infiltration
Capacity**



**Exfiltration
Performance**

UNIVERSITY OF
LOUISVILLE
CENTER FOR
INFRASTRUCTURE RESEARCH

DRAFT ONLY

8

MONITORING EFFORT

❖ Infiltration Capacity Monitoring

✓ Manual Surface Infiltration Measurements

Modified ASTM C1701

Four Locations Along the Curb Side

Tests were repeated periodically and within one week before and after each maintenance treatment



UNIVERSITY OF
LOUISVILLE
CENTER FOR
INFRASTRUCTURE RESEARCH

DRAFT ONLY

9

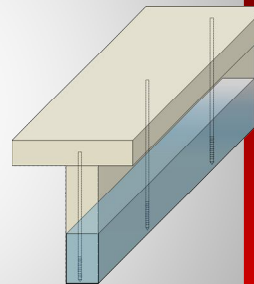
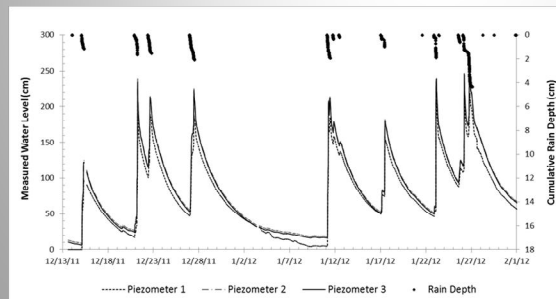
MONITORING EFFORT

❖ Infiltration Capacity Monitoring

✓ Electrical Measurements

Piezometers (water level logger)

Three locations at the bottom of the trench



DRAFT ONLY

10

MONITORING EFFORT

❖ Infiltration Capacity Monitoring

✓ Electrical Measurements

Based on the piezometer data a model was developed

The developed model predicts the ideal performance of the control and compares it to recorded data

This assessment technique is used to quantify the infiltration capacity and effectiveness of maintenance treatments

MONITORING EFFORT

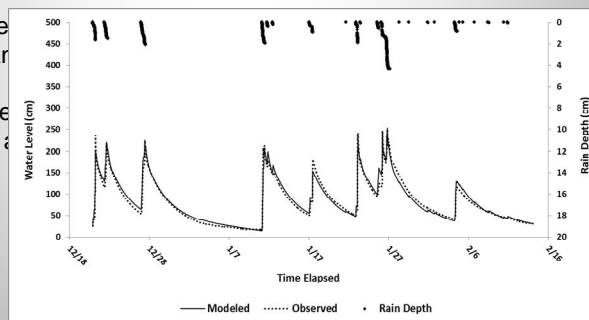
❖ Infiltration Capacity Monitoring

✓ Electrical Measurements

Based on the piezometer data a model was developed

The developed model predicts the ideal performance of the control and compares it to recorded data

This assessment technique is used to quantify the infiltration capacity and effectiveness of maintenance treatments



BASELINE PERFORMANCE

❖ Surface Infiltration Tests

Average baseline infiltration rates: 1250 in/hr (3200 cm/hr)

❖ Electronic Measurements

Developed model confirmed that both GI controls captured 100% of the storm runoff

During the first 10 events controls 19G and 19H cumulatively captured 40,000 gallons of storm runoff.

Ratio of volume captured to runoff volume: 1:1

ADVANCEMENT OF CLOGGING

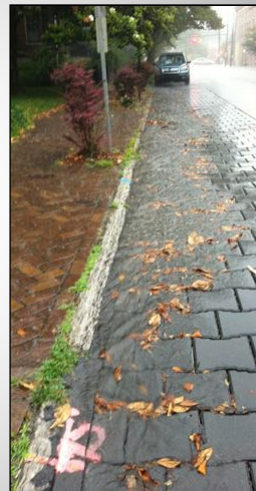
❖ Visual Inspections

Clogging advanced from the upgradient edge towards the downgradient edge and along the curb side

❖ Electronic Measurements

rate of clogging progression equal to:
10ft per an inch of rainfall

Once the clogging reached the downgradient edge the ratio of volume captured to runoff volume decreased (<1)... it was time for **maintenance!**

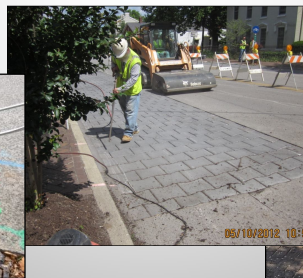


MAINTENANCE METHODS

❖ Three types of maintenance during 2012 and 2013

- ✓ Vacuum and Sweeping
- ✓ Pressurized Airjet
- ✓ Vac-Head

Maintenance Type	Number of Treatments
Vacuum & Sweeping	1
Pressurized Airjet	3
Vac-Head	1



DRAFT ONLY

MAINTENANCE METHODS

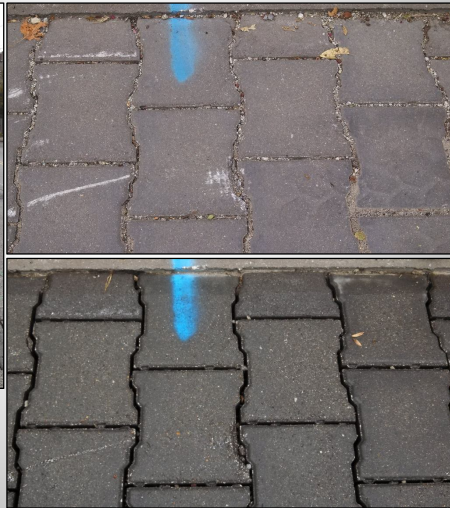
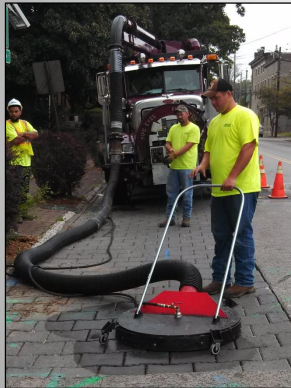
❖ Concerns with Airjet method



DRAFT ONLY

MAINTENANCE METHODS

❖ Vac-Head Method



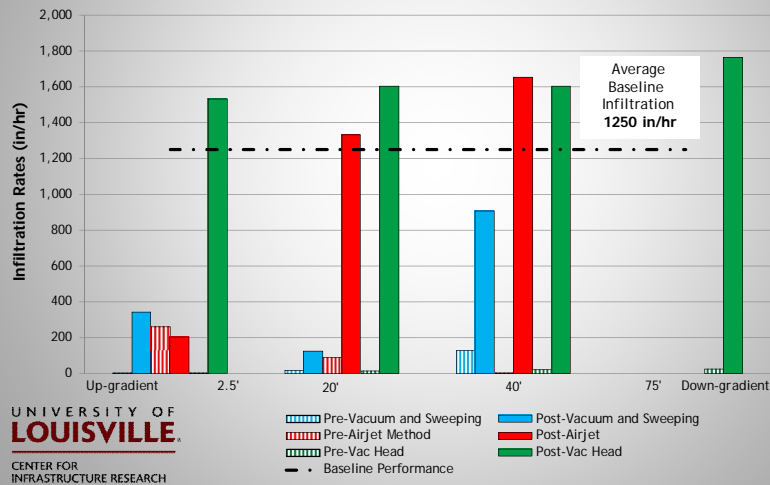
UNIVERSITY OF
LOUISVILLE
CENTER FOR
INFRASTRUCTURE RESEARCH

DRAFT ONLY

17

MAINTENANCE EFFECTIVENESS

❖ Surface Infiltration Tests Results (Control 19G)



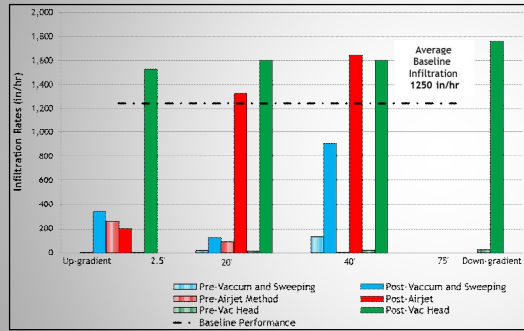
UNIVERSITY OF
LOUISVILLE
CENTER FOR
INFRASTRUCTURE RESEARCH

DRAFT ONLY

18

MAINTENANCE EFFECTIVENESS

❖ Surface Infiltration Tests Results (Control 19G)



- Vacuum & Sweeping was not effective
- First airjet method was effective in most locations except for the up-gradient side
- Effectiveness of airjet method was decreased in second and third tryouts (not shown in the graph)

- Vac-Head method were able to restore the infiltration rates in all locations including the up-gradient side

MAINTENANCE EFFECTIVENESS

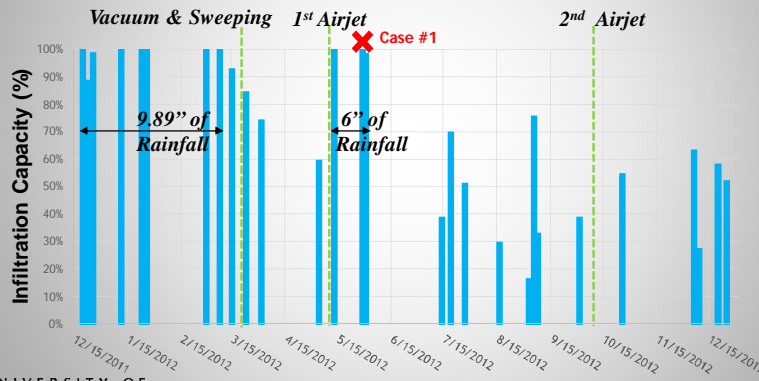
❖ Developed Model Results

Comparing the infiltration performance with baseline infiltration performance:

- ✓ How infiltration capacity changes with time?
- ✓ How effective surface maintenance treatments are?

MAINTENANCE EFFECTIVENESS

❖ Developed Model Output (Control 19G)



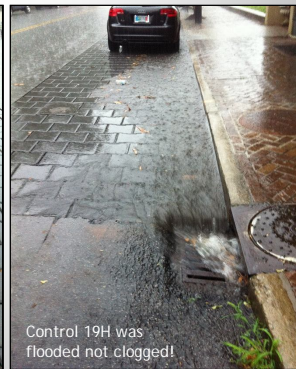
UNIVERSITY OF LOUISVILLE
CENTER FOR INFRASTRUCTURE RESEARCH

Each maintenance is identified with a vertical green line.

DRAFT ONLY

CASE #1: STORM EVENT 5/29/12

- ✓ Rainfall depth: 2.26 in
- ✓ Duration: 7 hours
- ✓ Max Intensity: 1.20 in/hr
- ✓ Controls 19G & 19H cumulatively captured: 16,181 Gallons
- ✓ The only time that control 19H flooded
- ✓ 19G captured all runoff

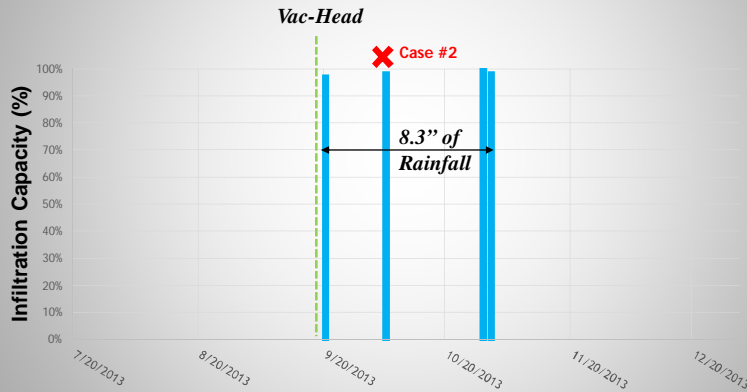


UNIVERSITY OF LOUISVILLE
CENTER FOR INFRASTRUCTURE RESEARCH

DRAFT ONLY

MAINTENANCE EFFECTIVENESS

❖ Developed Model Output (Control 19G)



UNIVERSITY OF
LOUISVILLE
CENTER FOR
INFRASTRUCTURE RESEARCH

DRAFT ONLY

CASE #2: STORM EVENT 10/5/13

- ✓ Rainfall depth: 4.47 in
- ✓ Duration: 35 hours in/hr
- ✓ Max Intensity: 1.68
- ✓ Controls 19G captured all surface runoff from its drainage area
- ✓ Volume Captured: 15,700 Gallons
- ✓ Control 19G was cleaned with Vac-Head method 17 days ago

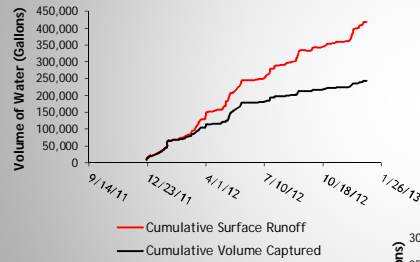


UNIVERSITY OF
LOUISVILLE
CENTER FOR
INFRASTRUCTURE RESEARCH

DRAFT ONLY

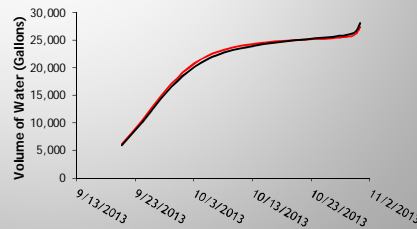
CONCLUSIONS

- ❖ Properly maintained PavDrain Pavars highly effective at capturing storm water runoff.



Infiltration Rates:
1250 in/hr - 1600 in/hr

Volume Captured in 1st year:
~250,000 Gallons



UNIVERSITY OF
LOUISVILLE
CENTER FOR
INFRASTRUCTURE RESEARCH

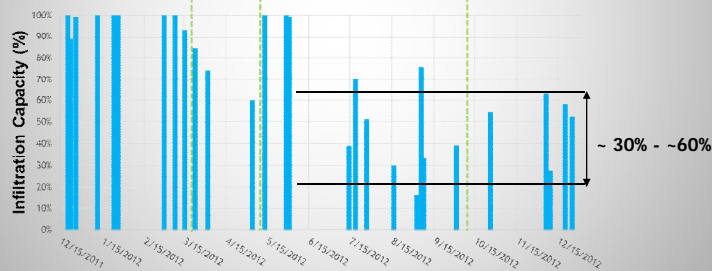
DRAFT ONLY

25

CONCLUSIONS

- ❖ Clogged but still functional!

- ✓ Minimum Infiltration Rates: 4-15 in/hr
- ✓ Infiltration Capacity: 30% - 60%



UNIVERSITY OF
LOUISVILLE
CENTER FOR
INFRASTRUCTURE RESEARCH

DRAFT ONLY

26

CONCLUSIONS

- ❖ Infiltration Capacity Can be Restored!
- ❖ Type of Maintenance treatment is important
- ❖ Pre & Post Maintenance Vac-Head Method ➔



UNIVERSITY OF
LOUISVILLE
CENTER FOR
INFRASTRUCTURE RESEARCH

DRAFT ONLY

27

THANK YOU!

- ❖ Questions?



❖ Contact Info

Email: Hamidreza Kazemi: h.kazemi@louisville.edu
Phone: 502.457.3320
Web: <https://louisville.edu/speed/civil/cir/home.html>

UNIVERSITY OF
LOUISVILLE
CENTER FOR
INFRASTRUCTURE RESEARCH

DRAFT ONLY

28